

3. SPOJNI PRIBOR General hardware

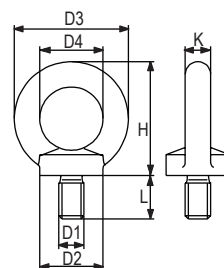
3.7. Očni vijak i matica

Očni vijak DIN 580 RX-lift

Eye bolt acc. to DIN 580 RX-lift

CE 2.1 2.2

Nosivost (t)	D1 (mm)	D2 (mm)	D3 (mm)	D4 (mm)	H (mm)	K (mm)	L (mm)	Težina (kg/100 kom)
WLL								Weight
0,08	M 6	20	36	20	36	8	13,0	5
0,14	M 8	20	36	20	36	8	13,0	6
0,23	M 10	25	45	25	45	10	17,0	11
0,34	M 12	30	54	30	53	12	20,5	18
0,49	M 14	35	63	35	62	14	27,0	28
0,70	M 16	35	63	35	62	14	27,0	28
0,85	M 18	40	72	40	71	16	30,0	45
1,20	M 20	40	72	40	71	16	30,0	45
1,40	M 22	50	90	50	90	20	36,0	87
1,80	M 24	50	90	50	90	20	36,0	87
2,10	M 27	55	96	50	97	20	39,0	88
3,20	M 30	65	108	60	109	24	45,0	166
3,20	M 33	65	108	60	109	24	45,0	166
4,60	M 36	75	126	70	128	28	54,0	265
4,60	M 39	85	144	80	147	32	63,0	403
6,30	M 42	85	144	80	147	32	63,0	403
6,30	M 45	100	166	90	168	38	68,0	638
8,60	M 48	100	166	90	168	38	68,0	638
8,60	M 52	110	184	100	187	42	78,0	880
11,50	M 56	110	184	100	187	42	78,0	880
16,0	M 64	120	206	110	208	48	90,0	1240
20,0	M 72	150	260	140	260	60	100,0	2330
28,0	M 80	170	296	160	298	68	112,0	3420
40,0	M 100	190	330	180	330	75	130,0	3640



- završna obrada: cinčani, crni ili polirani
- materijal C15

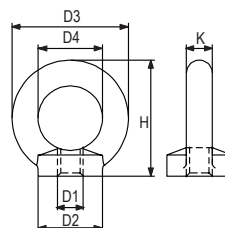


Očna matica DIN 582 RX-lift

Eye nut acc. to DIN 582 RX-lift

CE 2.1 2.2

Nosivost (t)	D1 (mm)	D2 (mm)	D3 (mm)	D4 (mm)	H (mm)	K (mm)	Težina (kg/100 kom)
WLL							Weight
0,08	6	20	36	20	36	8	4,8
0,14	8	20	36	20	36	8	5,0
0,23	10	25	45	25	45	10	9,0
0,34	12	30	54	30	53	12	16,0
0,49	14	35	63	35	62	14	24,0
0,70	16	35	63	35	62	14	24,0
0,85	18	40	72	40	71	16	36,0
1,20	20	40	72	40	71	16	36,0
1,40	22	50	90	50	90	20	72,0
1,80	24	50	90	50	90	20	72,0
2,10	27	55	96	53	97	22	70,0
3,20	30	65	108	60	109	24	132,0
3,20	33	65	108	60	109	24	130,0
4,60	36	75	126	70	128	28	208,0
4,60	39	85	144	80	147	32	202,0
6,30	42	85	144	80	147	32	311,0
6,30	45	100	166	90	168	38	304,0



Nosivost (t)	D1 (mm)	D2 (mm)	D3 (mm)	D4 (mm)	H (mm)	K (mm)	Težina (kg/100 kom)
WLL							Weight
6,30	45	100	166	90	168	38	304,0
8,60	48	100	166	90	168	38	502,0
8,60	52	110	184	100	187	42	495,0
11,50	56	110	184	100	187	42	669,0
16,00	64	120	206	110	208	48	930,0
20,0	72	150	260	140	260	60	1850,0
28,0	80	170	296	160	298	68	2730,0
40,0	100	190	330	180	330	75	3640,0

- završna obrada: cinčani, crni ili polirani
- materijal C15