

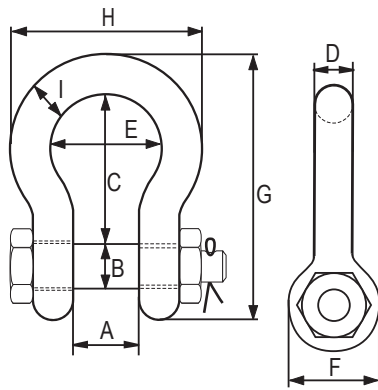
3. SPOJNI PRIBOR General hardware

3.1. Škopci

Škopac visokootporni omega sa maticom G2130 RX-lift

High tensile steel bow shackle with safety pin G2130 RX-lift

2.1 2.2 CE MTCb BL



- Standard: EN 13889
- materijal: visokootporni čelik
- Faktor sigurnosti: 6:1
- Završna obrada: vruće galv.

Nosivost (t)	Oznaka	Veličina (in)	A (mm)	B (mm)	C (mm)	D (mm)	E (mm)	F (mm)	G (mm)	H (mm)	I (mm)	Težina (kg/kom)
WLL	Mark	Nom. size										Weight
0,33	1/3	3/16	9.65	6.35	22.4	4.85	15.2	14.2	37.2	24.9	4.85	0.03
0,5	1/2	1/4	11.9	7.85	28.7	6.35	19.8	15.5	46.7	32.5	6.35	0.05
0,75	3/4	5/16	13.5	9.65	31.0	7.85	21.3	19.1	53.0	37.3	7.85	0.10
1,0	1	3/8	16.8	11.2	36.6	9.65	26.2	23.1	63.0	45.2	9.65	0.15
1,5	1-1/2	7/16	19.1	12.7	42.9	11.2	29.5	26.9	74.0	51.5	11.2	0.22
2,0	2	1/2	20.6	16.0	47.8	12.7	33.3	30.2	83.5	58.5	12.7	0.36
3,25	3-1/4	5/8	26.9	19.1	60.5	16.0	42.9	38.1	106	74.5	17.5	0.76
4,75	4-3/4	3/4	31.8	22.4	71.5	19.1	51.0	46.0	126	89.0	20.6	1.23
6,5	6-1/2	7/8	36.6	25.4	84.0	22.4	58.0	53.0	148	102	24.6	1.79
8,5	8-1/2	1	42.9	28.7	95.5	25.4	68.5	60.5	167	119	26.9	2.57
9,5	9-1/2	1-1/8	46.0	31.8	108	28.7	74.0	68.5	190	131	31.8	3.75
12,0	12	1-1/4	51.5	35.1	119	31.8	82.5	76.0	210	146	35.1	5.31
13,5	13-1/2	1-3/8	57.0	38.1	133	35.1	92.0	84.0	233	162	38.1	7.18
17,0	17	1-1/2	60.5	41.4	146	38.1	98.5	92.0	254	175	41.1	9.43
25,0	25	1-3/4	73.0	51.0	178	44.5	127	106	313	225	57.0	15.4
35,0	35	2	82.5	57.0	197	51.0	146	122	348	253	61.0	23.7
42,5	42,5	2-1/4	95	65	220	57	160	143	382	274	67	33,5
55,0	55	2-1/2	105	70,0	267	66,5	184	145	453	327	79,5	44,61
85,0	85	3	127	82.5	330	76.0	200	165	546	365	92.0	70
120,0	120	3-1/2	133	95.5	372	92.0	229	203	626	419	105	120
150,0	150	4	140	108	368	104	254	229	653	468	116	153