

3. SPOJNI PRIBOR General hardware

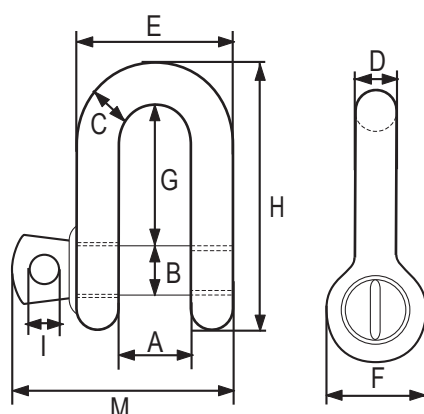
3.1. Škopci

RX-lift

Škopac ravni visokootporni G210 RX-lift

High tensile steel dee shackle G210 RX-lift

2.1 2.2 CE MTCb BL



- Standard: EN 13889
- materijal: visokootporni čelik
- Faktor sigurnosti: 6:1
- Završna obrada: vruće galv.

Nosivost (t)	Oznaka	Veličina (in)	A (mm)	B (mm)	C (mm)	D (mm)	E (mm)	F (mm)	G (mm)	H (mm)	I (mm)	M (mm)	Težina (kg/kom)
WLL	Mark	Nom. size											Weight
0,5	1/2	1/4	11.9	7.85	6.35	6.35	24.6	15.5	22.4	40.4	4.85	35.1	0.05
0,75	3/4	5/16	13.5	9.65	7.85	7.85	29.5	19.1	26.2	48.5	5.60	42.2	0.08
1,0	1	3/8	16.8	11.2	9.65	9.65	35.8	23.1	31.8	58.5	6.35	51.5	0.13
1,5	1-1/2	7/16	19.1	12.7	11.2	11.2	41.4	26.9	36.6	67.5	7.85	60.5	0.20
2,0	2	1/2	20.6	16.0	12.7	12.7	46.0	30.2	41.4	77.0	9.65	68.5	0.27
3,25	3-1/4	5/8	26.9	19.1	15.7	16.0	58.5	38.1	51.0	95.5	11.2	85.0	0.57
4,75	4-3/4	3/4	31.8	22.4	20.6	19.1	70.0	46.0	60.5	115	12.7	101	1.20
6,5	6-1/2	7/8	36.6	25.4	24.6	22.4	81.0	53.0	71.5	135	12.7	114	1.43
8,5	8-1/2	1	42.9	28.7	25.4	25.4	93.5	60.5	81.0	151	14.2	129	2.15
9,5	9-1/2	1-1/8	46.0	31.8	31.8	28.7	103	68.5	91.0	172	16.0	142	3.06
12	12	1-1/4	51.5	35.1	35.1	31.8	115	76.0	100	191	17.5	156	4.11
13,5	13-1/2	1-3/8	57.0	38.1	38.1	35.1	127	84.0	111	210	19.1	174	5.28
17,0	17	1-1/2	60.5	41.4	41.1	38.1	137	92.0	122	230	20.6	187	7.23
25,0	25	1-3/4	73.0	51.0	54.0	44.5	162	106	146	279	25.4	231	12.1
35,0	35	2	82.5	57.0	51.0	51.0	184	122	172	312	31.0	263	19.2
55,0	55	2-1/2	105	70.0	66.5	66.5	238	145	203	377	35.1	330	32.5