

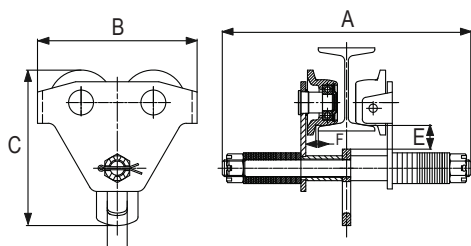
5. DIZALICE, KOLICA I HVATALJKE Hoists, clamps

5.1. Dizalice lančane ručne

Kolica za dizalicu "STANDARD" tip GCT 810 RX-lift

Plain travel trolley type GCT 810 RX-lift

2.1 2.2 CE MTCa



* za I i H profile - veći raspon

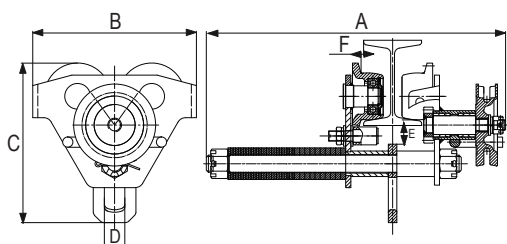
• EN 13157

| Nosivost (t) | Ispitna sila (t) | Širina I-profila za tip S (mm) | Širina I-profila za tip L (mm) | A, tip S (mm) | A, tip L (mm) | B (mm) | C (mm) | D (mm) | E (mm) | F (mm) | Min. radius (m) | Neto težina S≈L (kg) |
|--------------|------------------|--------------------------------|--------------------------------|---------------|---------------|--------|--------|--------|--------|--------|-------------------|----------------------|
| Capacity | Proof load | I-Beam width S type | I-Beam width L type | | | | | | | | Min. radius curve | Net weight |
| 0,5 | 0,625 | 68-203 | 68-305 | 297 | 399 | 212 | 184 | 22 | 29,5 | ≈3 | 0,6 | 6 |
| 1 | 1,25 | 68-203 | 68-305 | 310 | 412 | 248 | 223,5 | 28 | 30,0 | ≈3 | 0,8 | 10 |
| 2 | 2,5 | 88-203 | 88-305 | 329 | 431 | 293 | 267,5 | 34 | 30,0 | ≈3 | 1 | 17 |
| 3 | 3,75 | 110-203 | 110-305 | 348 | 450 | 350 | 322 | 42 | 34,5 | ≈3 | 1,4 | 29 |
| 5 | 6,25 | 116-203 | 116-305 | 378 | 480 | 382 | 372 | 48 | 36,5 | ≈5 | 1 | 44 |
| 10 | 12,5 | 130-203 | 130-305 | 411 | 513 | 471 | 483 | 72 | 40 | ≈5 | 1,2 | 87 |

Kolica za dizalicu upravljiva lancem "COMPACT" tip GCL 810 RX-lift

Geared travel trolley type GCL 810 RX-lift

2.1 2.2 CE MTCa



* za I i H profile - veći raspon

• EN 13157

| Nosivost (t) | Ispitna sila (t) | Širina I-profila za tip S (mm) | Širina I-profila za tip L (mm) | A, tip S (mm) | A, tip L (mm) | B (mm) | C (mm) | D (mm) | E (mm) | F (mm) | Min. radius (m) | Neto težina S≈L (kg) |
|--------------|------------------|--------------------------------|--------------------------------|---------------|---------------|--------|--------|--------|--------|--------|-------------------|----------------------|
| Capacity | Proof load | I-Beam width S type | I-Beam width L type | | | | | | | | Min. radius curve | Net weight |
| 0,5 | 0,625 | 68-203 | 68-305 | 336,5 | 438,5 | 212 | 184 | 22 | 29,5 | ≈3 | 0,6 | 10 |
| 1 | 1,25 | 68-203 | 68-305 | 356,5 | 485,5 | 248 | 223,5 | 28 | 30,0 | ≈3 | 0,8 | 14 |
| 2 | 2,5 | 88-203 | 88-305 | 372,5 | 474,5 | 293 | 267,5 | 34 | 30,0 | ≈3 | 1 | 21 |
| 3 | 3,75 | 110-203 | 110-305 | 387,5 | 489,5 | 350 | 322 | 42 | 34,50 | ≈3 | 1,4 | 34 |
| 5 | 6,25 | 116-203 | 116-305 | 405,5 | 507,5 | 382 | 372 | 48 | 36,5 | ≈5 | 1 | 49 |
| 10 | 12,5 | 130-203 | 130-305 | 432 | 534 | 471 | 483 | 72 | 40 | ≈5 | 1,2 | 92 |

