

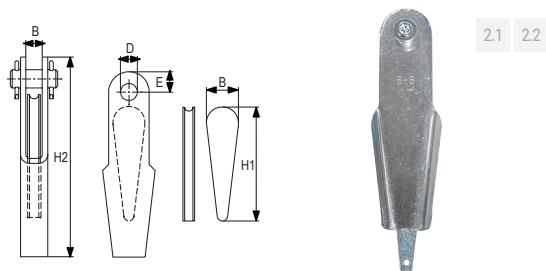
3. SPOJNI PRIBOR General hardware

3.9. Zatvarači

Zatvarač užni DIN 15315 RX-lift

Wedge socket acc. to DIN 15315 RX-lift

Veličina (mm)	Užad promjera (mm)	H1 (mm)	W (mm)	B (mm)	D (mm)	E (mm)	H2 (mm)
Size	Rope dia.						
5	4-5	68	19	12	10	14	110
6,5	5-6,5	58	19	15	10	16	100
8	6-8	92	25	14	12	20	150
11	9-11	117	32	17	16	26	190
14	12-14	141	38	22	18	32	230
17	15-17	162	46	25	22	36	260
20	18-20	186	52	27	25	40	300
25	22-25	180	60	40	42	40	285
30	26-30	182	62	55	52	55	335

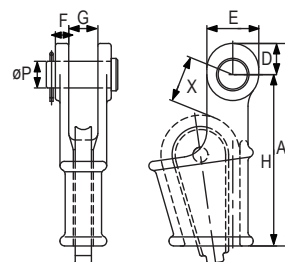


- DIN 15315
- sa maticom i osiguračem
- nelegirani čelik

Zatvarač užni otvoreni OWS TIP

Open wedge socket OWS type

Min. prekidna sila (Mt)	Za užu promjera (mm)	A (mm)	D (mm)	E (mm)	F (mm)	G (mm)	H (mm)	Ø P (mm)	X (mm)	Težina (kg/kom)
MBL	For rope dia.									Weight
8	7-8	130	20	34	9	18	110	17,5	40	0,7
12	9-10	150	23	40	11	20,5	125	20,6	45	1,2
20	11-13	183	27	48	12,7	25,5	156	25,4	60	2,3
25	14-16	224	32	56	14,5	32	192	30	65	3,6
40	17-19	272	40	68	16,5	38	232	35	70	6,3
55	20-22	312	48	80	20,5	45	264	41	80	10,3
80	23-26	370	58	100	22,5	51	312	51	90	16
100	27-29	413	65	110	25	57	348	57	100	21,5
120	30-32	455	72	124	28	63	384	63	110	30
130	34-36	508	76	132	28	70	432	63	125	36
160	37-39	548	80	140	30	76	468	70	140	50
200	40-42	589	85	150	33	76	504	76	155	60
250	43-48	674	98	170	39	89	576	89	175	90
300	49-52	733	108	186	46	101	625	95	195	125
375	54-58	816	120	210	53	113	696	108	220	175
450	60-68	950	133	230	60	127	817	121	250	250
600	72-76	1057	145	250	76	146	912	133	280	400
650	81-86	1160	160	275	79	159	1000	140	330	515



- EN 13411-6
- završna obrada: vruće galv.